

# Anne Arundel County, MD Transit Map Consolidation



Iryna Bondarenko

Jennifer Hopkins

James Hull

David Lipscomb

Abidemi Olafusi

URSP 688L

Fall 2016



# Today's Presentation

- Transit maps analysis
- Resident, worker, and job concentration areas
- Transit stop accessibility
- Major points of interest
- ArcGIS Online transit application demo
- County recommendations



# ANNE ARUNDEL COUNTY MARYLAND

Area: 588 sq. mi.

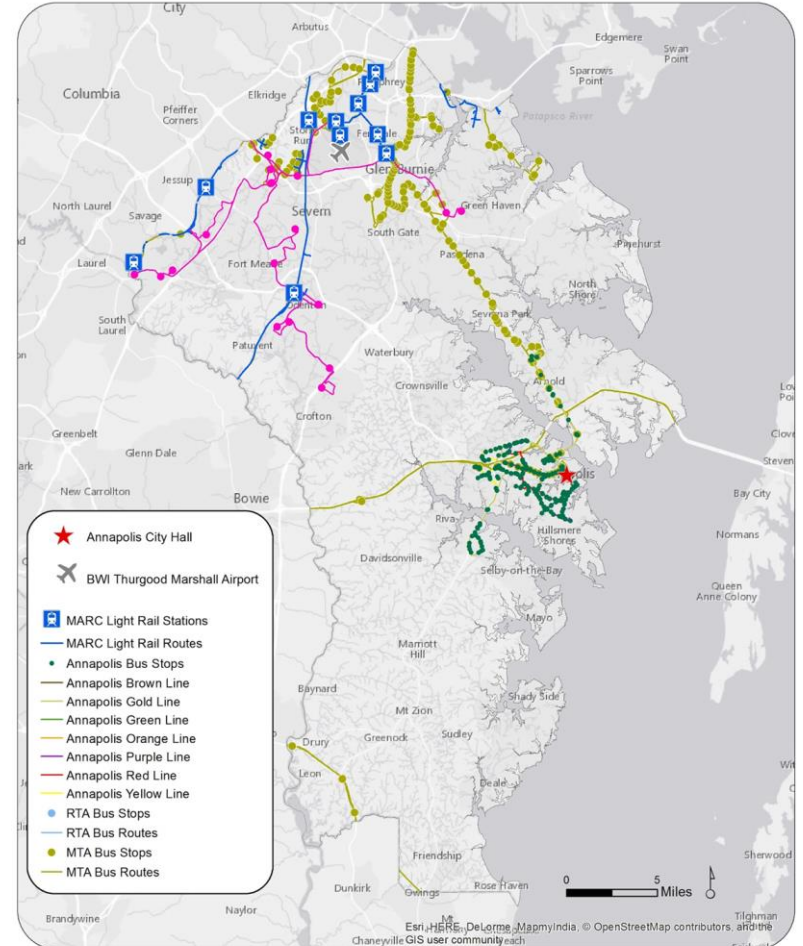
Population: 564,195 people

Employment: 263,100 people

## Objective:

To assist Anne Arundel County residents, city officials, and visitors by bridging the gap between accessibility and mobility with a modern, consolidated transportation map.

## Anne Arundel County, MD Transit Networks



# Consolidated Transit Map

**MARC Light Rail Stations: 11**

**MTA Bus Stops: 414**

**RTA Bus Stops: 26**

**Annapolis City Bus Stops: 238**

# Transit Overview

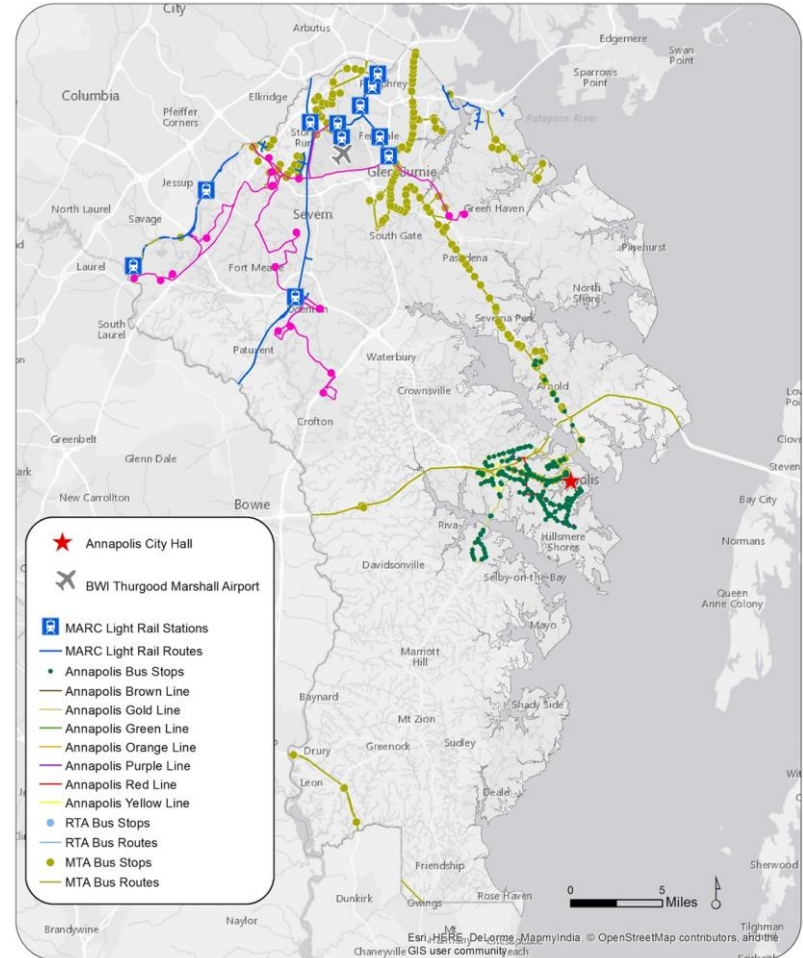
Light rails concentrated in northern part of the county, near Baltimore

RTA service in northwestern part of the county

MTA vs RTA

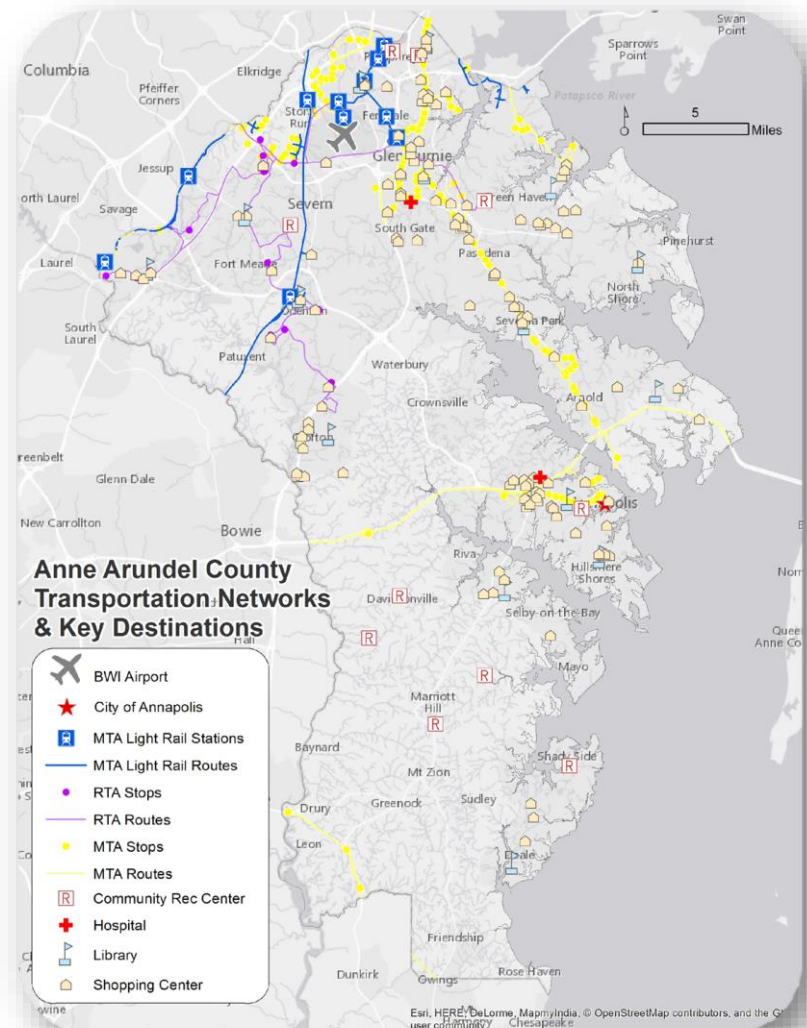
MTA buses and routes concentrated in northern and eastern parts of the county through the east of Annapolis

City of Annapolis: 238 bus stops (57%) of the county's 414 total stops



# Key Destinations

- Airport
- Schools
- Libraries
- Government Buildings
- Hospitals
- Health Centers
- Park & Rides
- Parks
- Community Recreation Centers
- Shopping Centers
- Churches



# Overview of Key Destinations

## **BWI Airport**

Best served by Light Rail and RTA routes. Connection to Annapolis via MTA bus service.

Why?

## **Education: 218**

Transit system cannot serve them all.

## **Government: 95 buildings**

Payment centers, Courts, and local, city, and county buildings

Locations of employment and services

# Overview of Key Destinations

## **Park and Rides:** 22

Tracy's Landing park and ride in the south; correlation?

## **Parks & Recreation:** 132

Areas of concern are in the southern and central parts of the county and areas in the eastern part of the county along the Chesapeake Bay above Annapolis

## **Shopping Centers:** 138

Majority of them are in the northern part of the county and around Annapolis

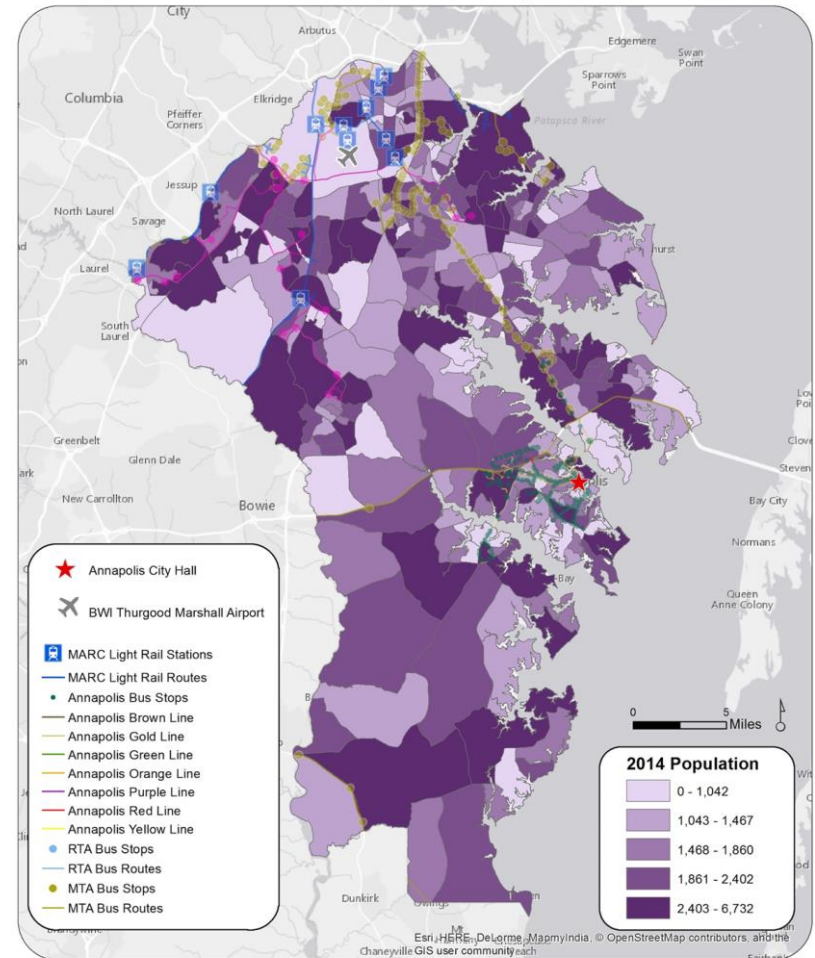
What does this mean? Economy

**Churches:** 287 churches



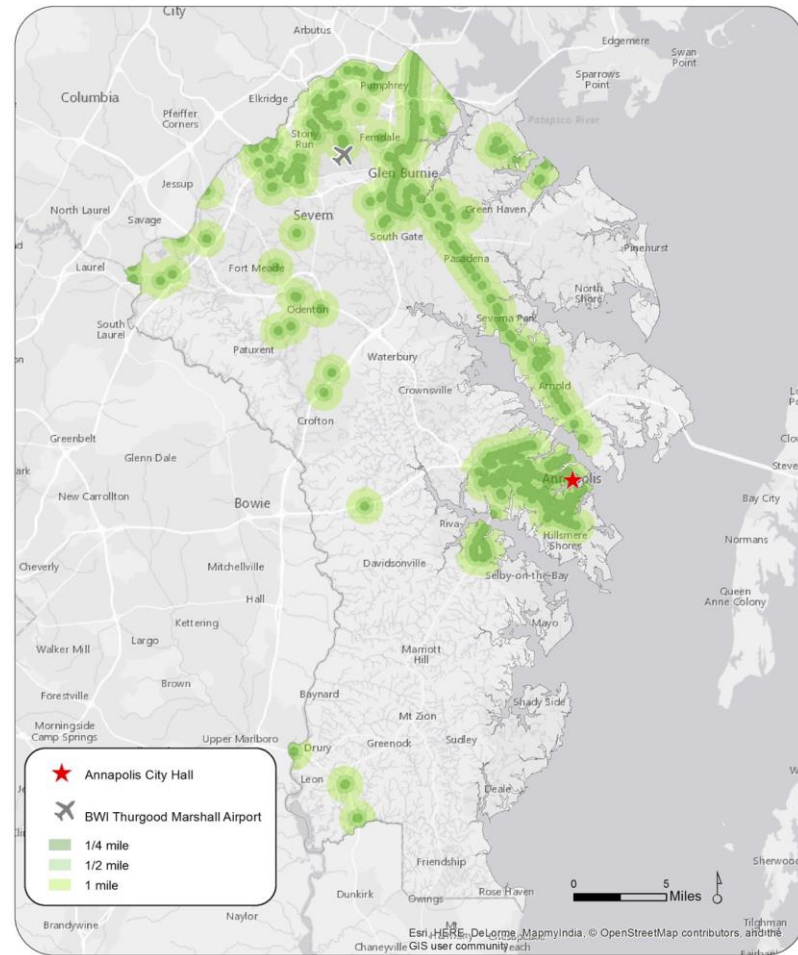
# Population Distribution

- 2014: 560,286 residents
  - 4.2% increase in past 4 years
- Population over 65 years old: 75,156
  - 18.1% increase in past 5 years



# Transit Stop Accessibility

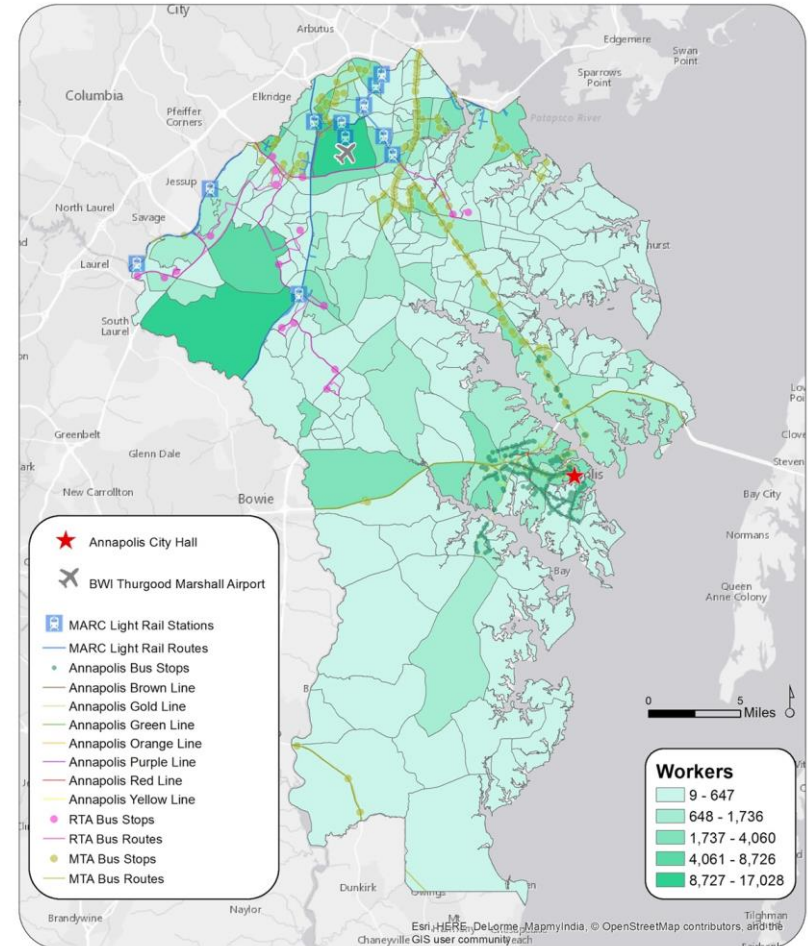
- 20% of residents within ¼ mile of transit
- 42% of residents within ½ mile of transit
- 77% of residents within 1 mile of transit
- **Areas in need of improved transit access:**
  - South of Annapolis (Mayo, Harbor View, Shady Side, Deale)
  - Bays to the north of Annapolis
  - Central Anne Arundel County



Anne Arundel County, MD  
Workers by Census Tract (2000)

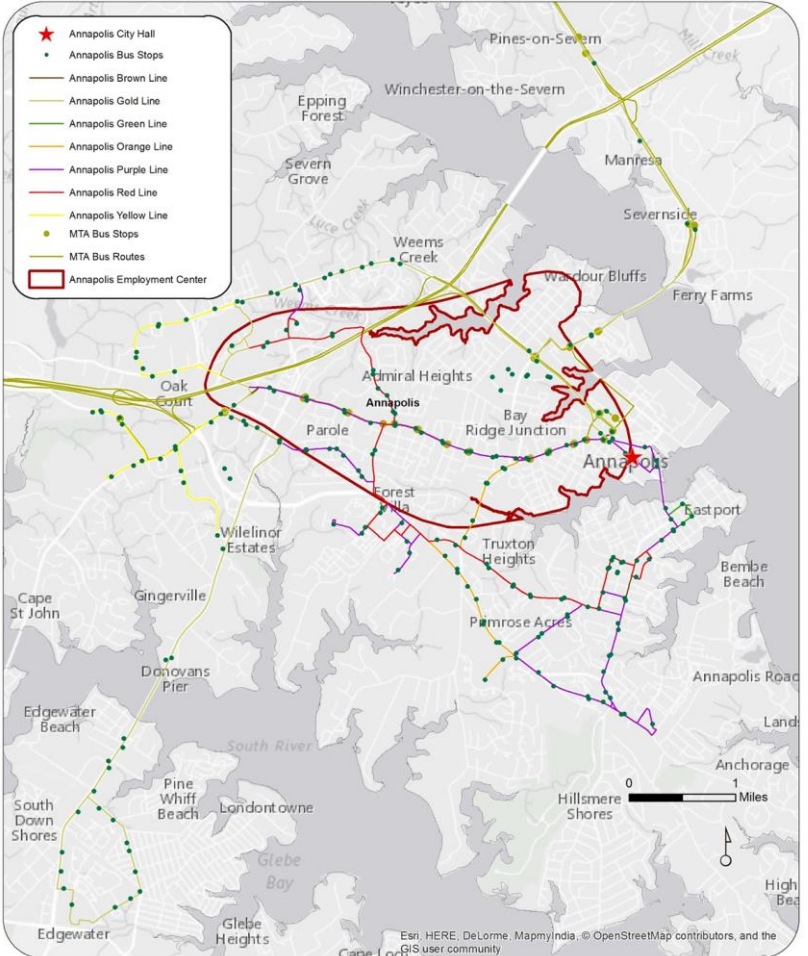
# Worker Distribution

- Concentrations in the northwestern part of the county and Annapolis
- More concentrated than population density
- Higher worker density near employment centers



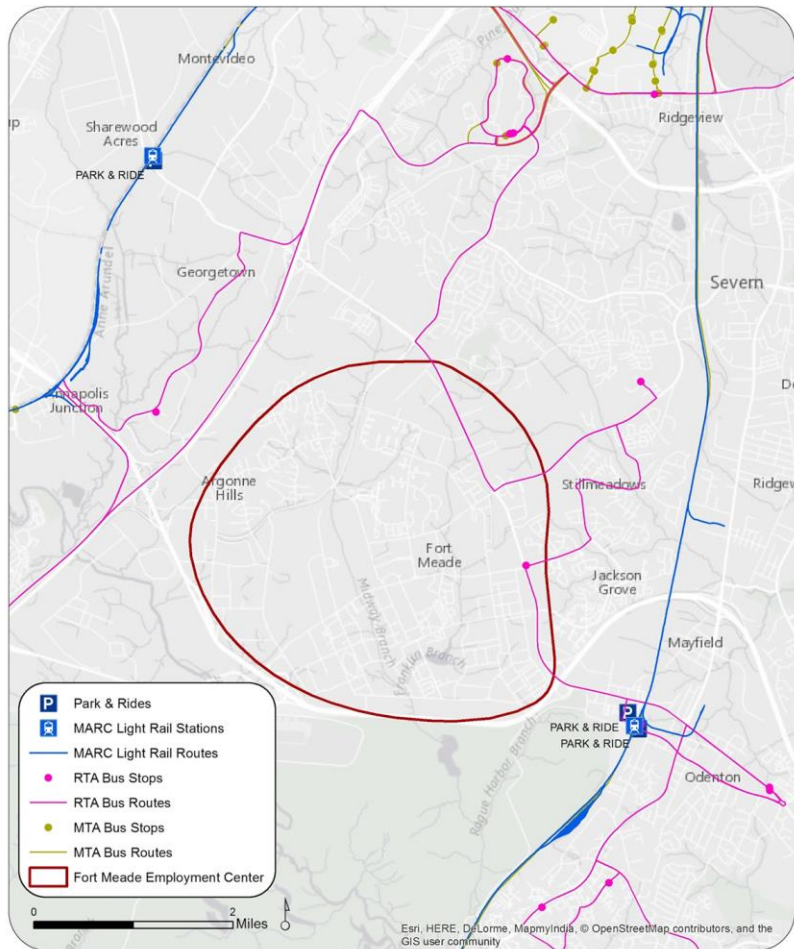
# Employment Centers

- Fort Meade
- City of Annapolis
- BWI Airport
- Linthicum Heights

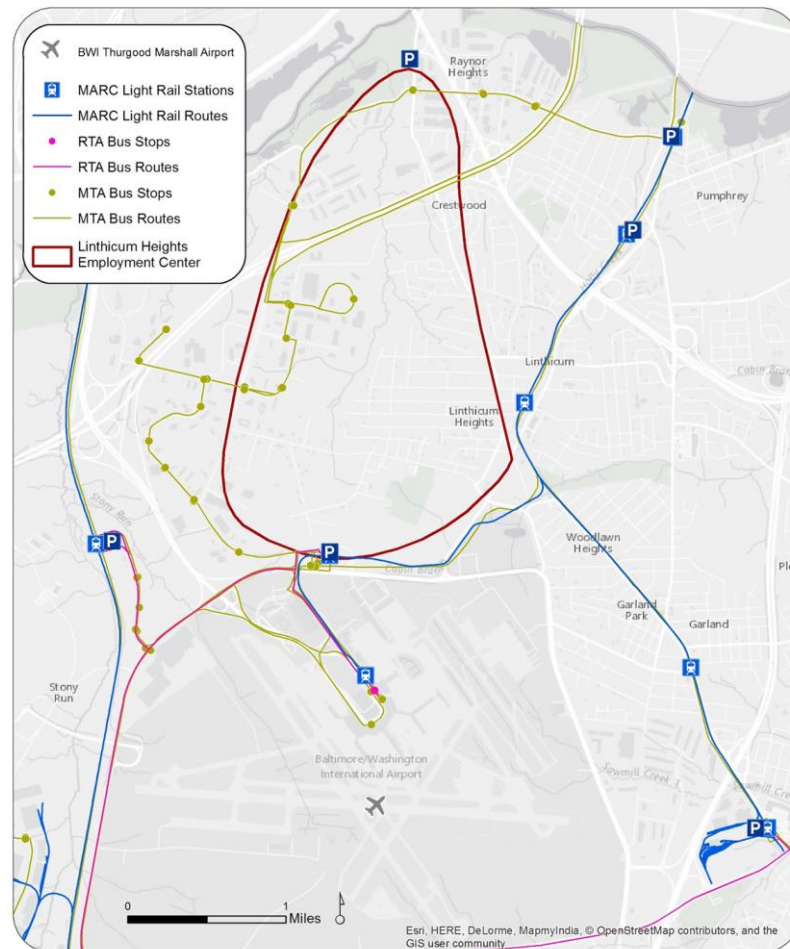




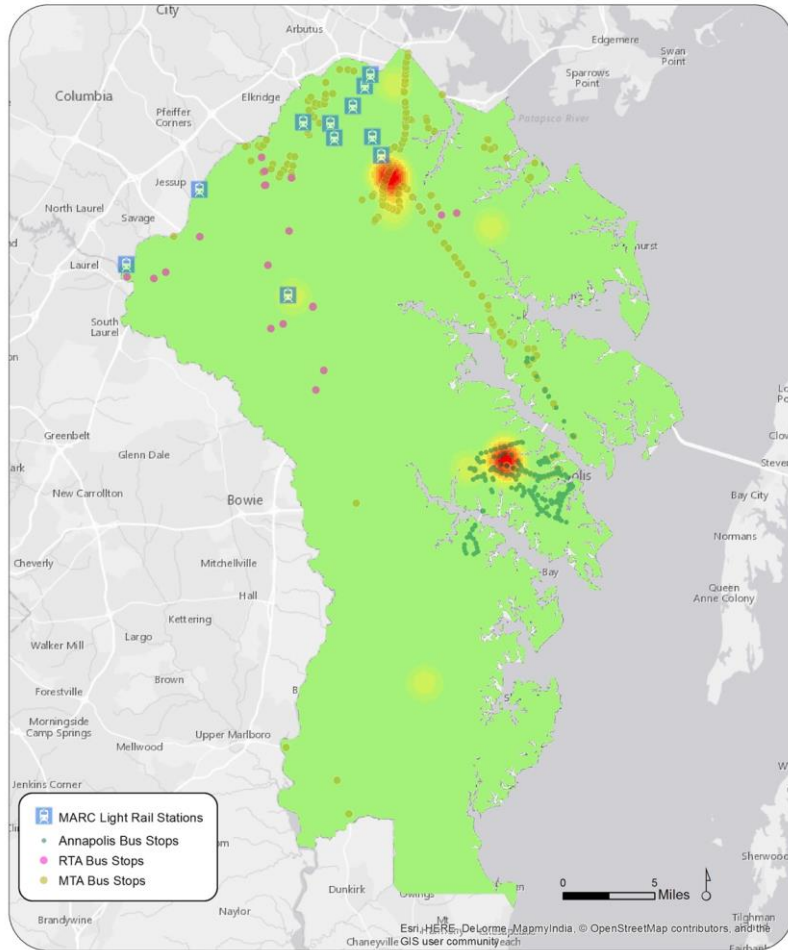
## Anne Arundel County, MD Employment Center - Fort Meade



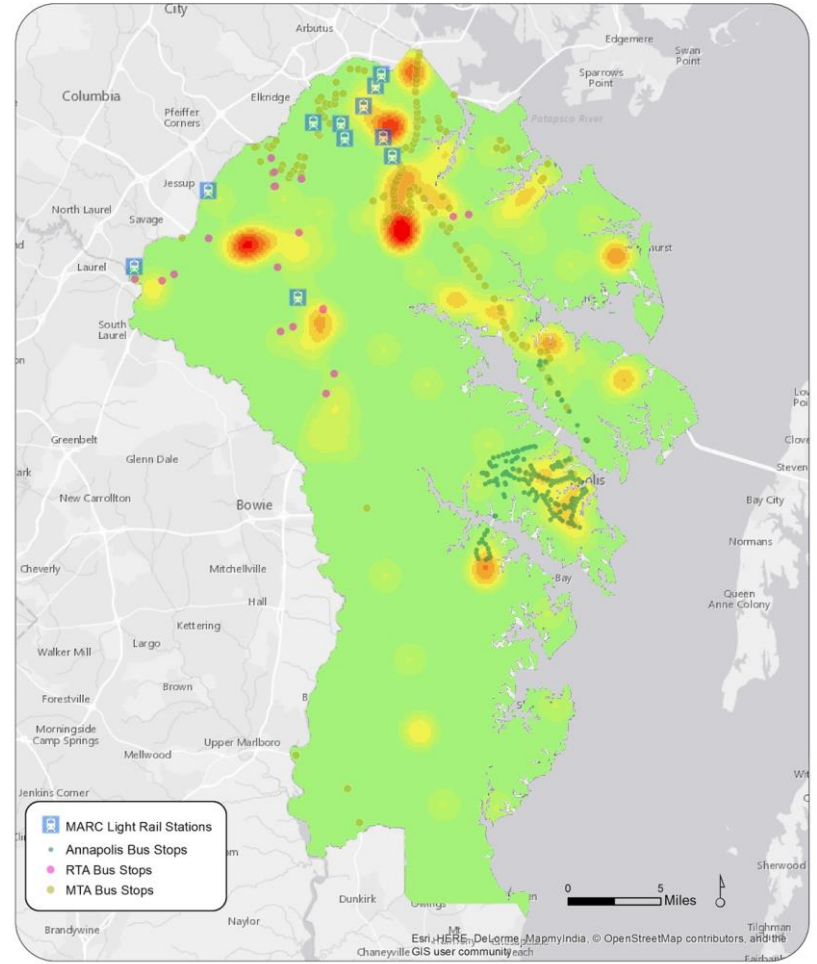
## Anne Arundel County, MD Employment Center - Linthicum Heights



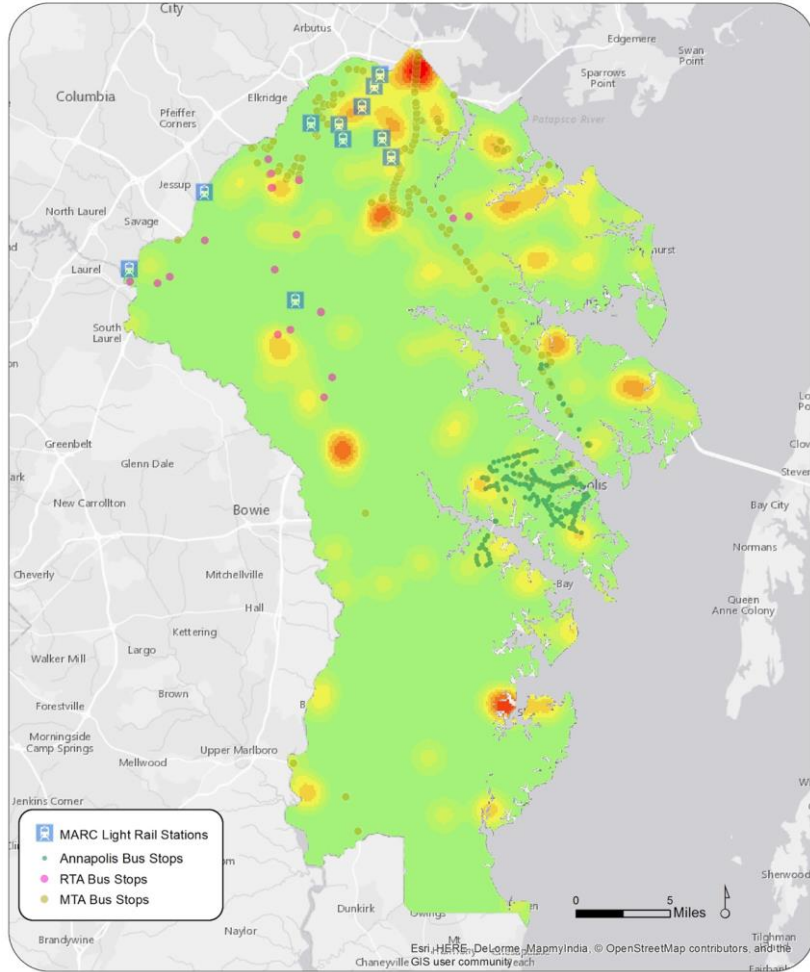
# Anne Arundel County, MD Heatmap - Hospitals and Health Centers



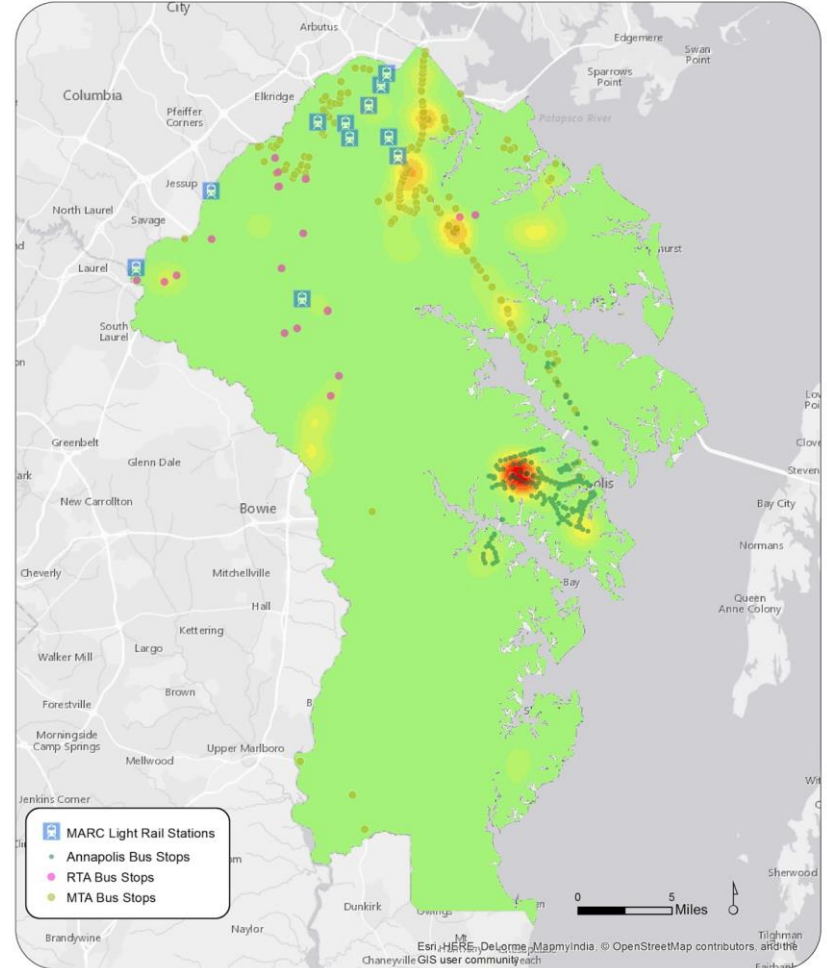
# Anne Arundel County, MD Heatmap - Schools



Anne Arundel County, MD  
Heatmap - Parks



Anne Arundel County, MD  
Heatmap - Shopping Centers



# ArcGIS Online

- Data is set up in ArcGIS
- Hosted on ArcGIS Online as a feature service
- Configured in an ArcGIS Online Web Map
- App developed using ESRI's Web AppBuilder
- Available using web browser on computer or mobile device
- <http://is.gd/AACOTrans>



# Recommendations

- Expand existing transit system to the south of the county
- Provide improved access to underserved areas of the county (bays, center)
- Provide riders access to consolidated transit map to assist in navigation
- Improve walking access to transit stops
- Promote walking to transit stops in order to encourage transit usage