

Purple Line Corridor Coalition

Walking Tour



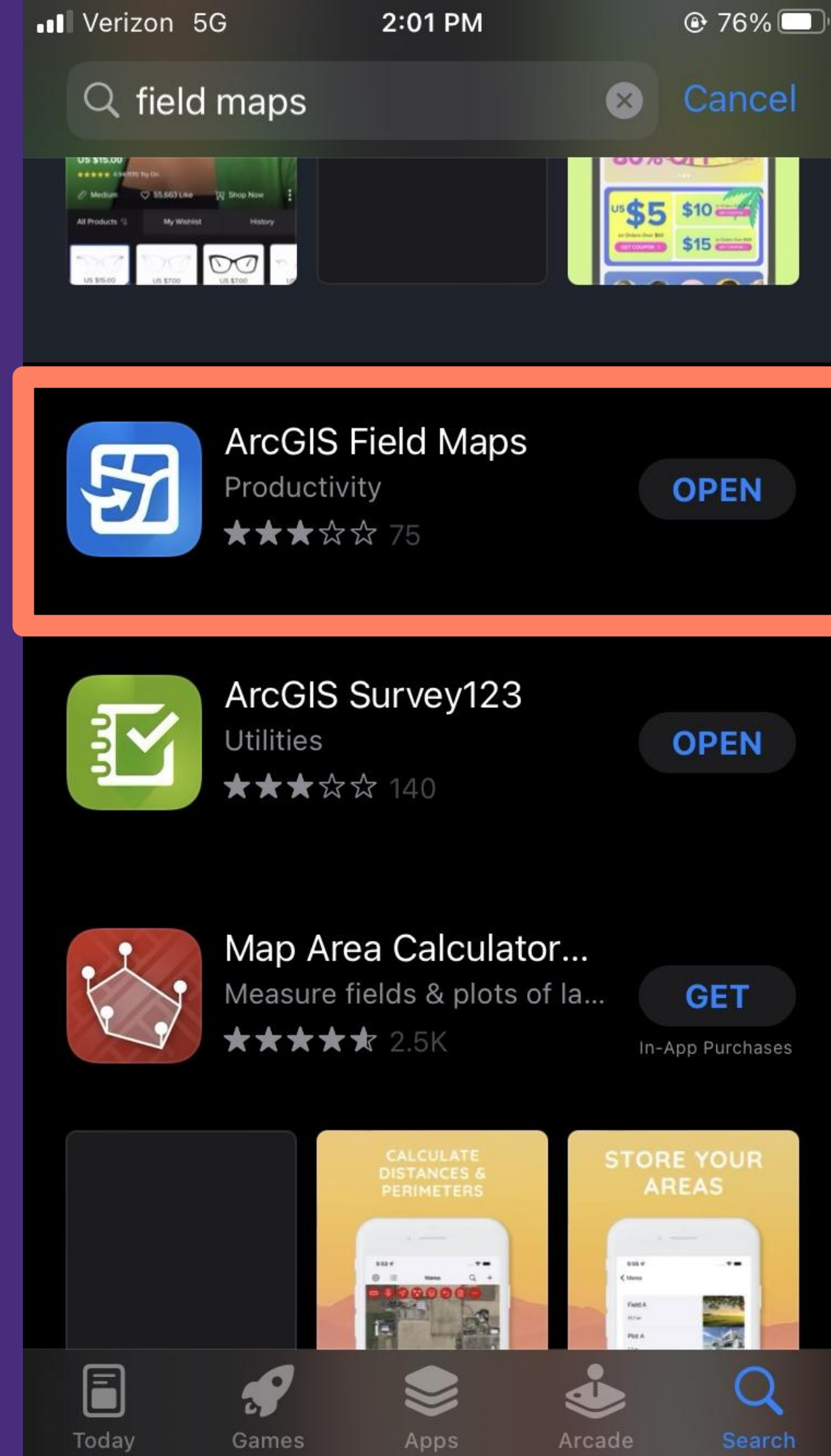
Downloading the App



SCAN THE QR Code!

or....

1. Download Field Maps application through your App Store on your smartphone
 - a. Android: [ArcGIS Field Maps - Apps on Google Play](#)
 - b. iPhone: [ArcGIS Field Maps on the App Store](#)
2. Use your ArcGIS Online log in (UMD Account) (You can view the app without logging in, but cannot enter information)
3. Allow Field Maps to use your location
4. In the Search bar, type “Purple Line Walking Your Data Collection Map” (Once you are signed in -you will be able to find it under “My Organization” and you can add it to your favorites for easier access.



Agenda

1 Background

2 Walking Tour Maps and App

3 Explainer Video

PLCC Tours

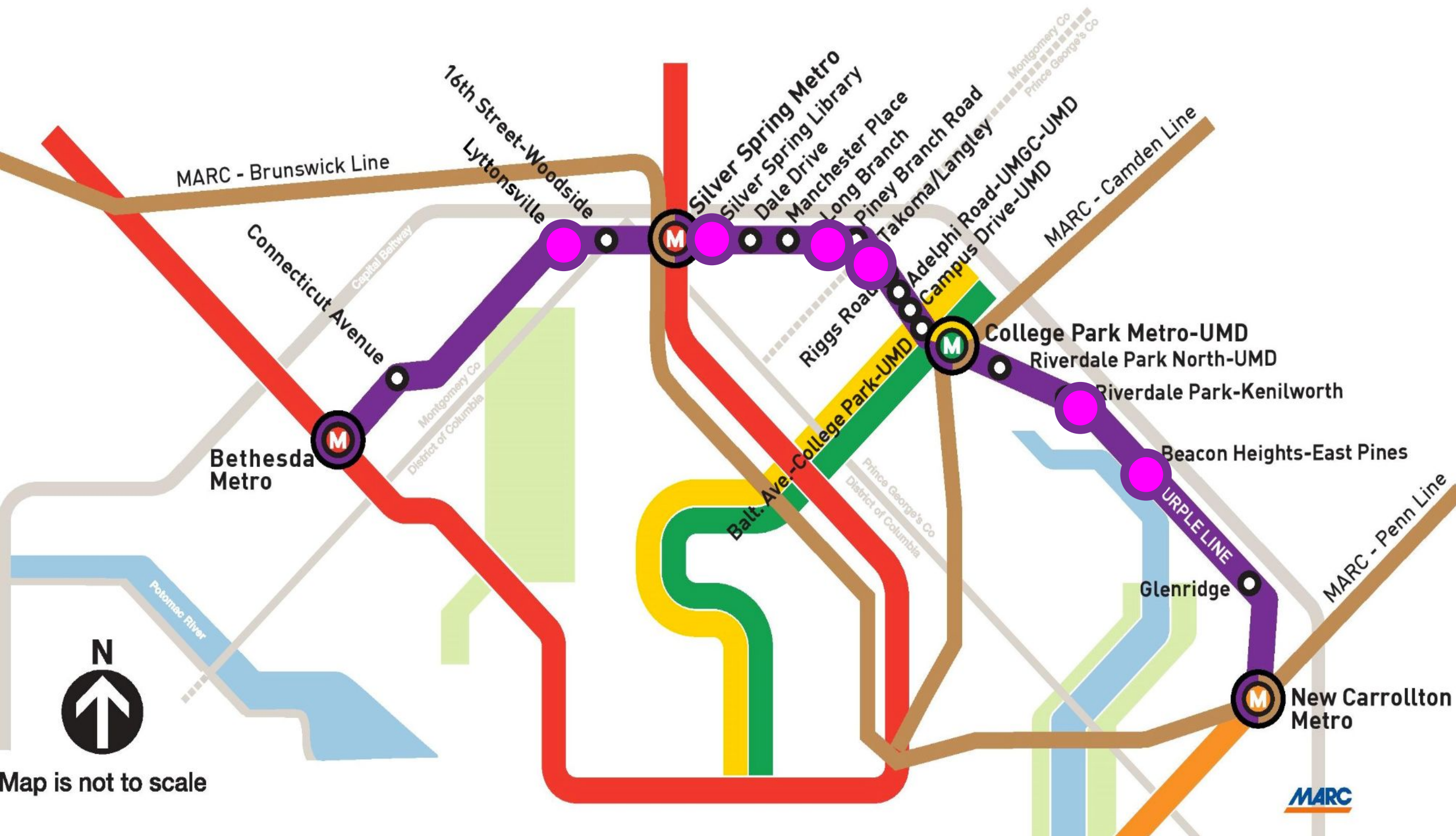
The **Purple Line** passes through diverse communities rich in culture, history, and economic activity.

As part of the **Purple Line Corridor Coalition's** overarching mission to ensure racially and economic equitable growth along the Purple Line, the PLCC tasked us with creating six initial Walking Tour Maps of **Purple Line Stations** that can be used to navigate the communities around each station.



Walking Tour Station Locations

Location on DC Metro Map



- Takoma-Langley
- Silver Spring Library
- Lyttonsville
- Riverdale Park
- Long Branch
- Beacon Heights



PLCC



PALS

Our Role

As planners rooted in community engagement, we were able to leverage our technical geographic information systems (GIS) skills to create an **easy-to-use** but efficient tool for mapping important points of interest surrounding forthcoming Purple Line stations.

The 2022 *Purple Line Transit-Oriented Development Assessment Analysis Report* helped us identify **key census and neighborhood elements** to include in our application.

Our goal is to bring residents “to the table” by using suitable technology to **document their lived experiences** within their neighborhoods to inform equitable, sustainable, and smart development decisions.

Our Process

Building the App



Allows walking tour leaders to enter observations and user notes

Creating the Maps



Walking route maps to hand out to attendees to write notes

Showing You How

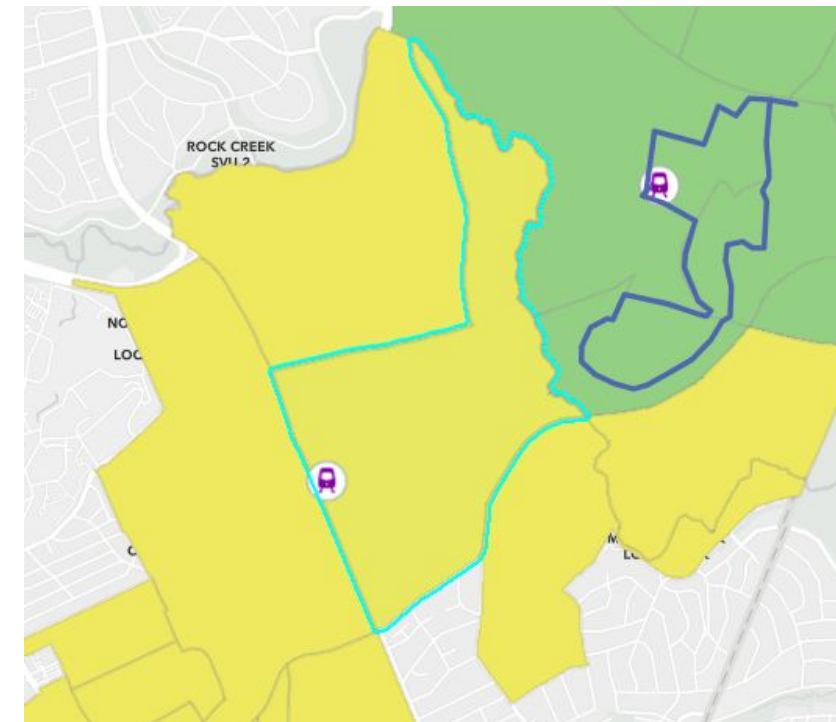
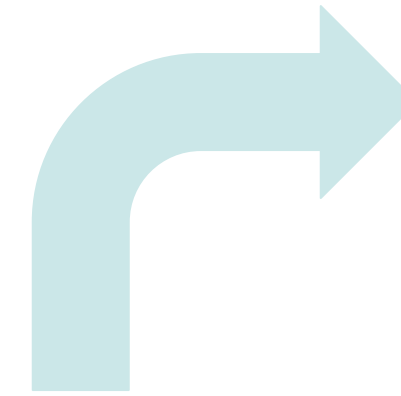


Video that teaches users how to use the app

Subareas with Census Block Group Data Layer

From TOD Assessment Analysis Report

- Edited to include most relevant information
- Some information was removed as a longer description was needed to clarify and we felt it crowded the app and PLCC leaders have access through other sources



Census Data

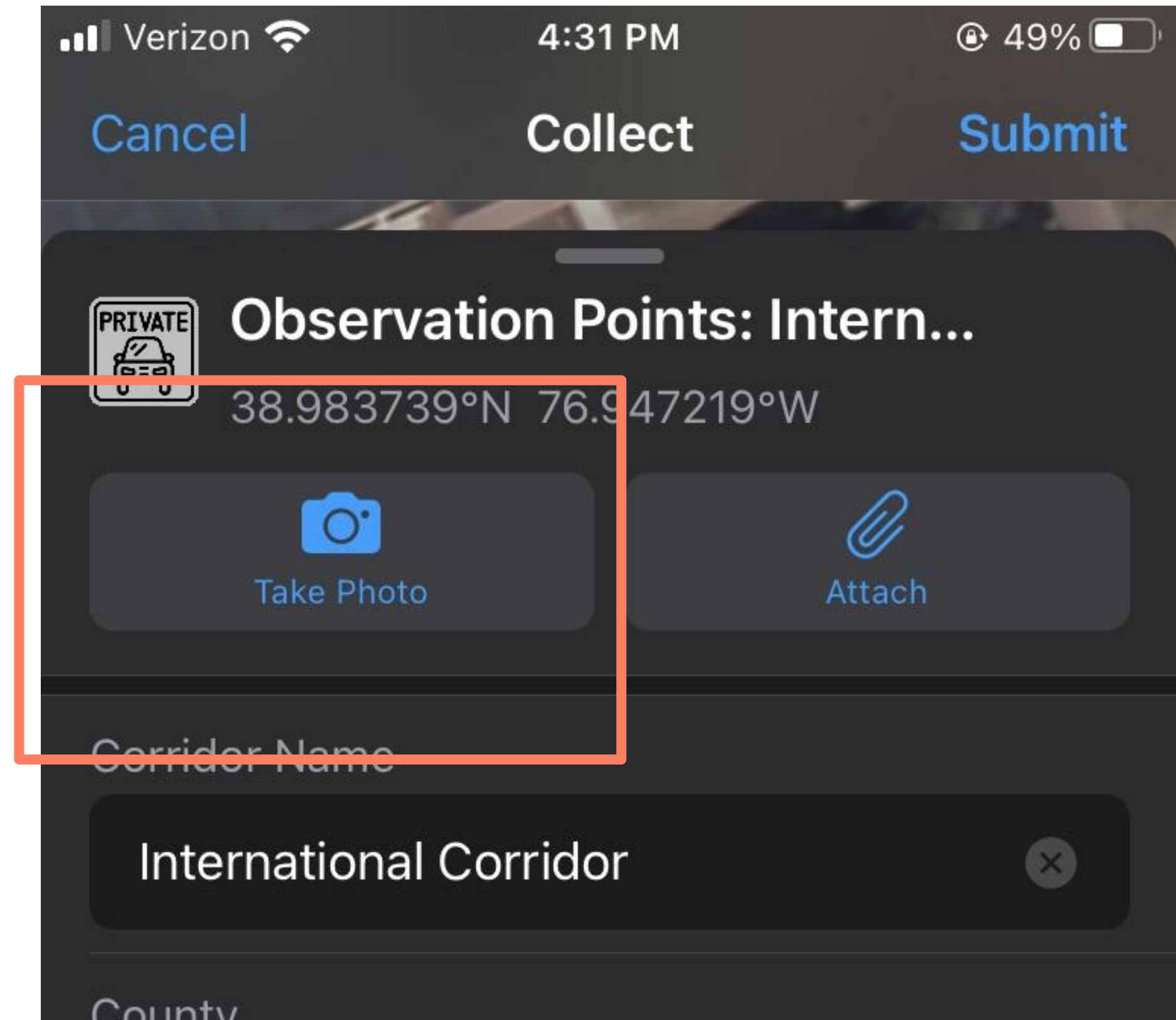
Total Population	1,895
Median Household Income	153,131
Average Household Size	2
Median House Value	808,800
Neighborhood	Chevy Chase
Median Rent	2,001
Total Occupied Housing Units	927
Owner Occupied Units	635
Vacant Housing Units	0
Renter Occupied Units	292
Labor Force	972
Unemployed	7
Public Transit to Work	60
Drive Alone to Work	703
Carpool to Work	93
Bike to Work	25
Walk to Work	8
Work at Home	46
Subarea	Bethesda - Chevy Chase
Census Tract	705100

Observation Points

We identified relevant points of interest that users can quickly log during their walking tour.

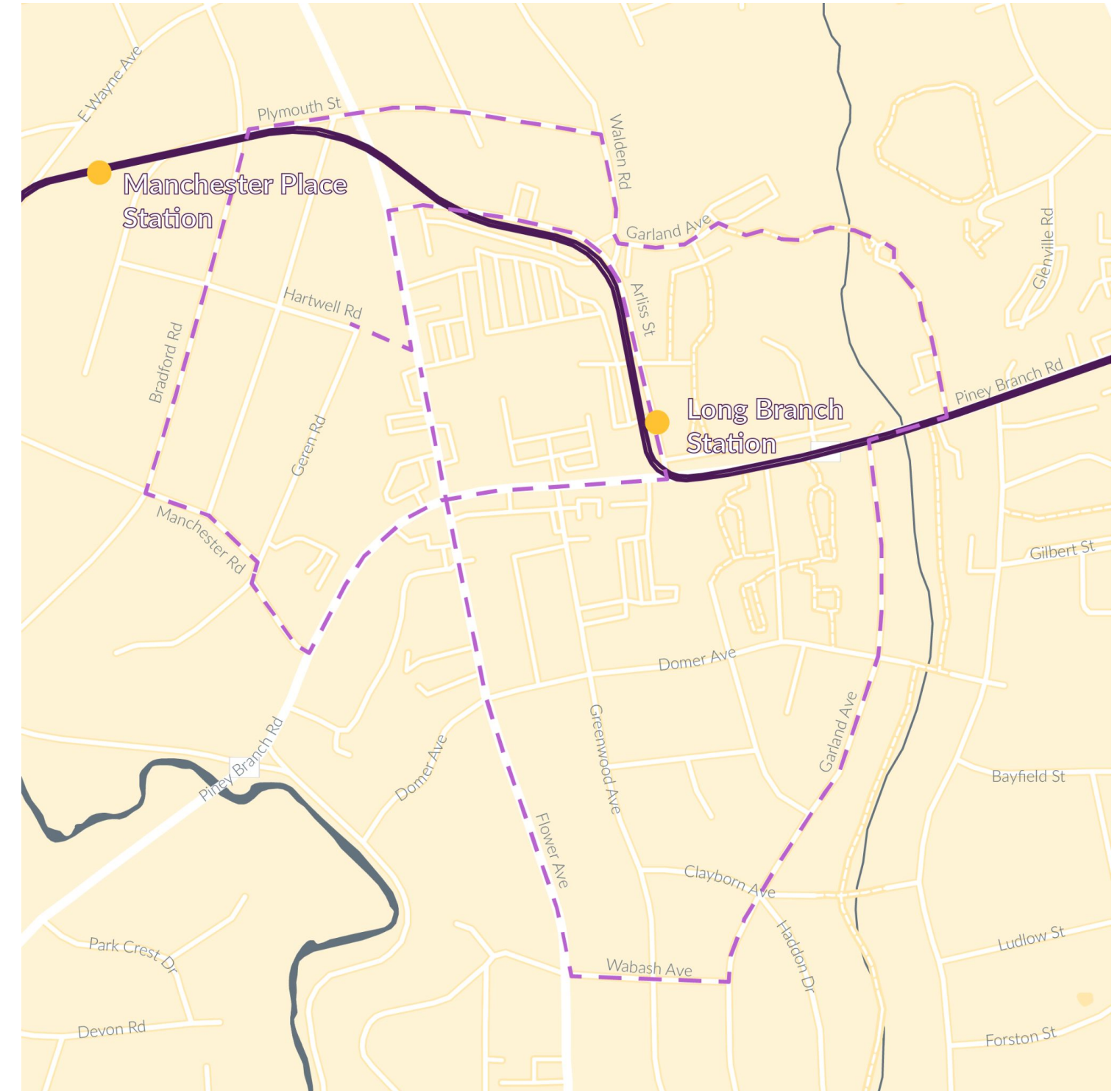
If the user wants to log something that is not predetermined, they can select 'OTHER' and type their observations into the "Other Notes about Features or Other". We encourage users to add pictures to help the PLCC leverage the findings.

We created two entry boxes for users to either log an **observed** key feature OR to log a **desired** feature.

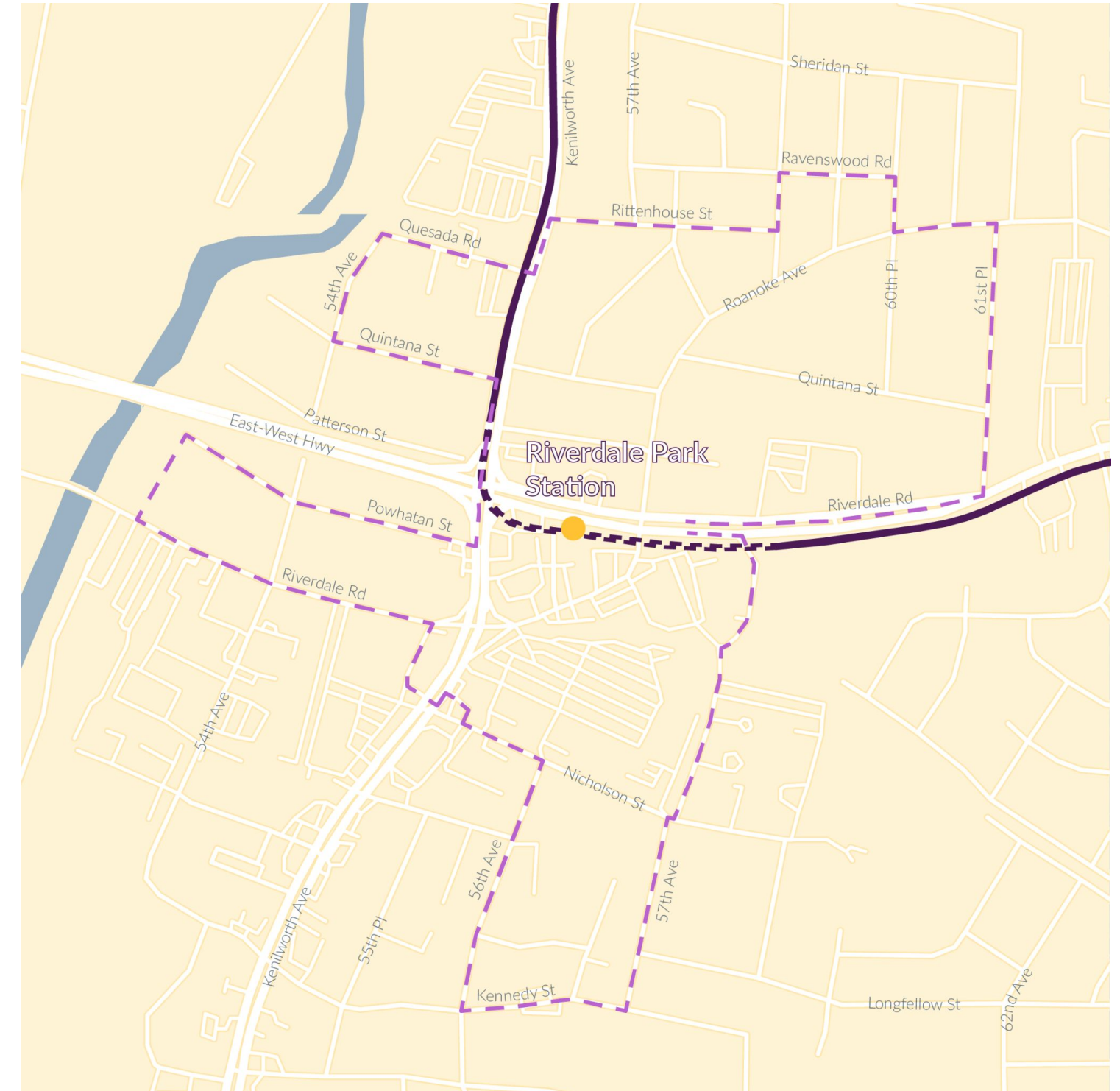


It is easy for the administrator to add or delete points so please keep in touch as you familiarize yourself with the app!

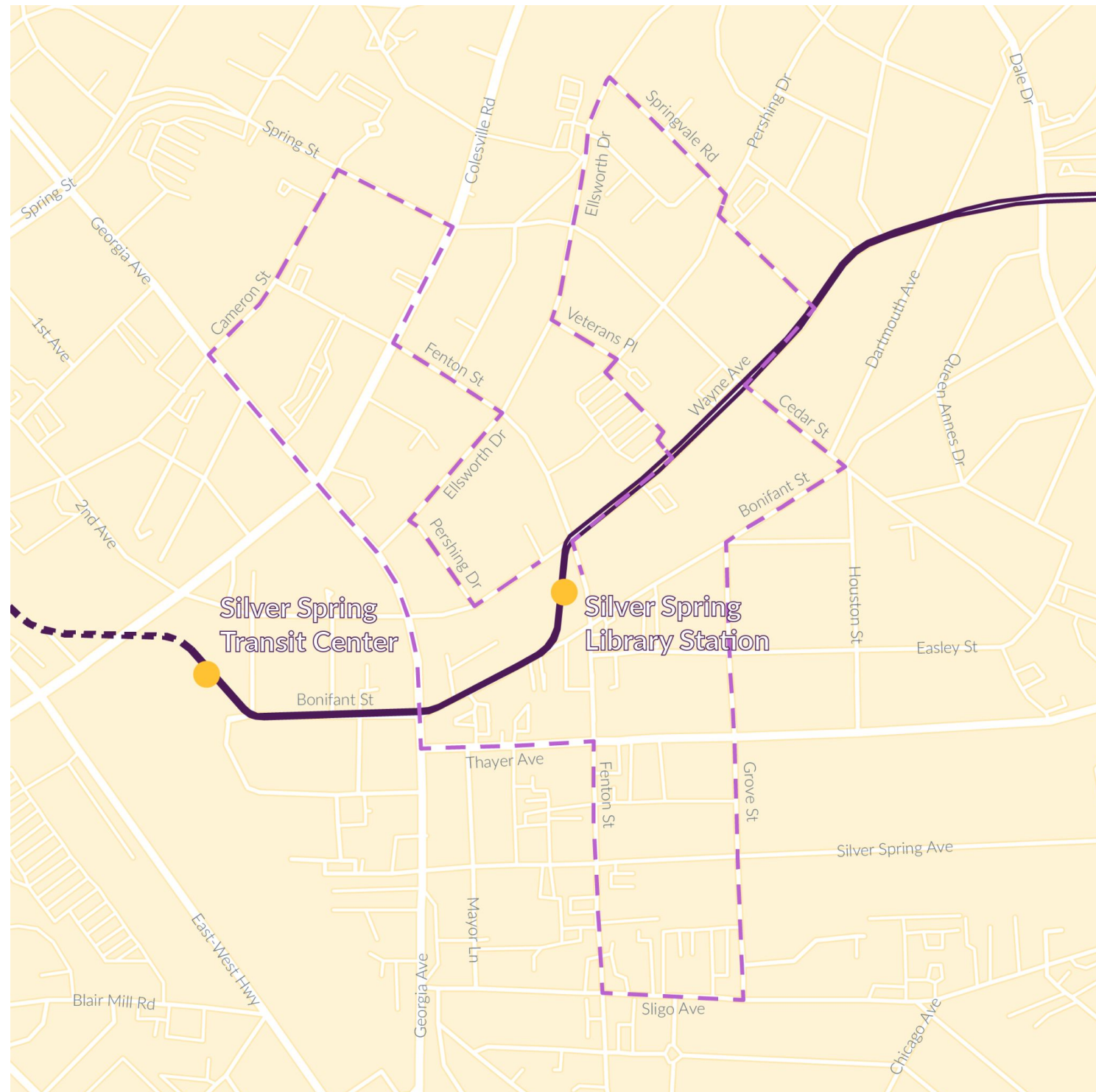
PDF Maps: Beacon Heights and Long Branch

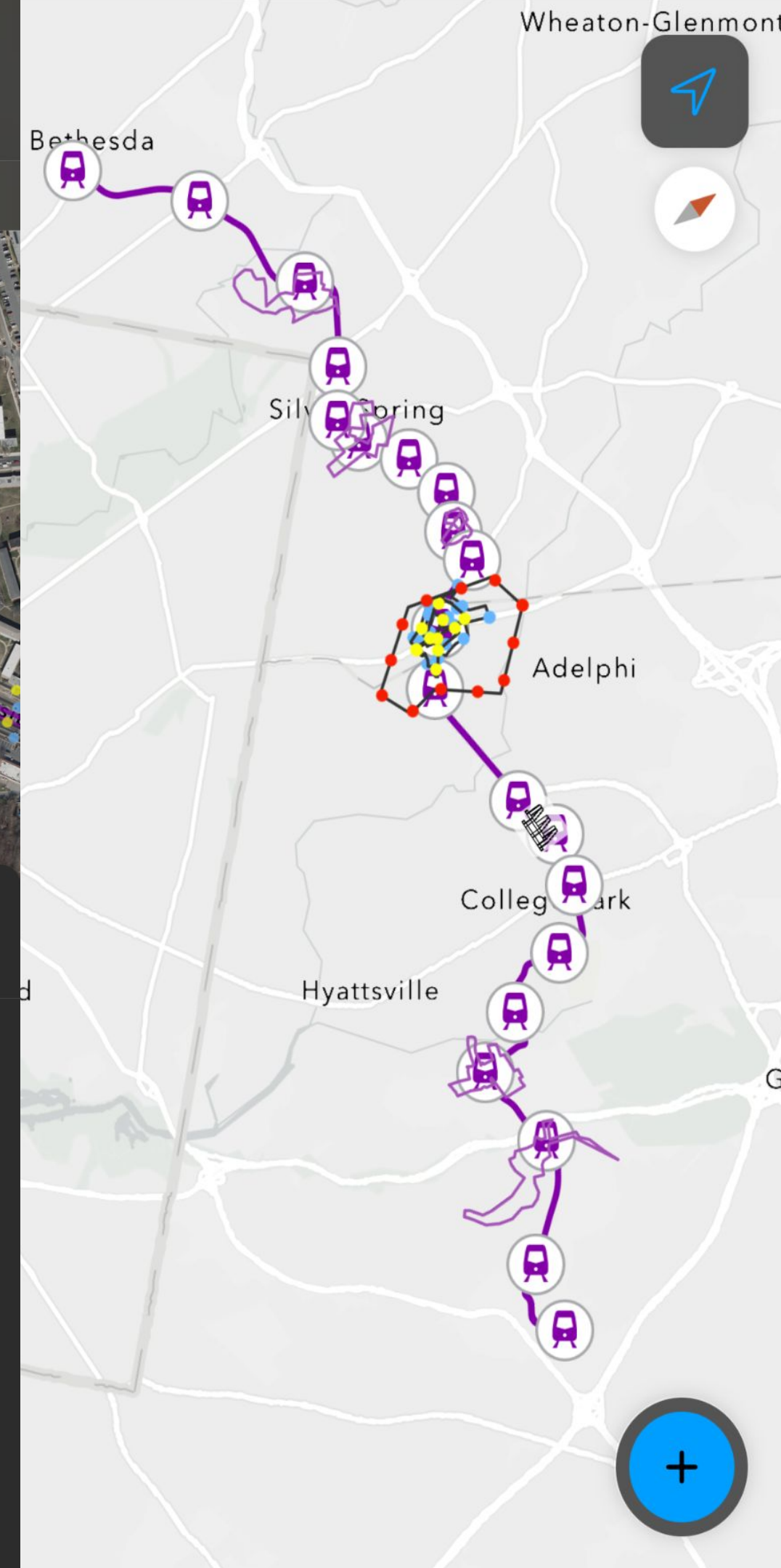
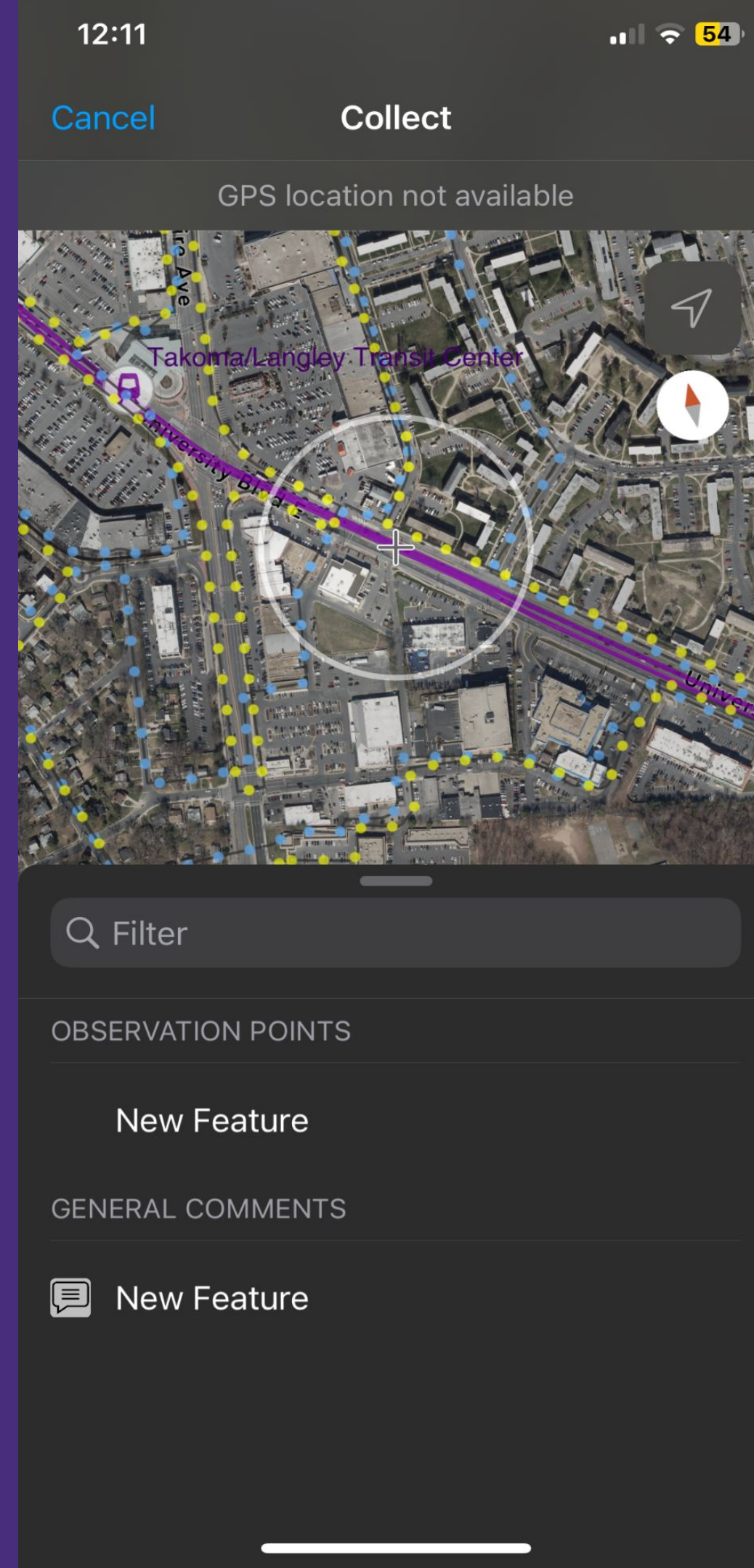


PDF Maps: Lyttonsville and Riverdale Park



PDF Maps: Silver Spring Library and Takoma-Langley





ArcGIS Field Maps

Field Maps App Tutorial



Quick Note

For any POI that is larger than a point, please have users make a note in the comment section.

This app currently only logs single points to make it as user-friendly as possible.

Adding lines or polygons is doable, but we wanted you - as the PLCC staff - to be able to make/create the points quickly.



THANK YOU!

Possibilities for specificity when adding points

Key Features Observed:

1. Bus station vs bus stop shelters (want both?)
2. Single Family Homes (this is probably well documented)
3. Unpaved Walking paths (change to Informal?)
4. Multimodal Transit Connections (helpful or confusing?)

Want to condense these re food options?

1. Full service grocery stores
2. Local business
3. Local corner market grocery stores
4. National or Chain businesses
5. Restaurants, chain
6. Restaurant, locals

Want to condense these re park options?

1. Informal Community Gather spots
2. Informal Green Space
3. Public Parks
4. Seating Areas

Possibilities for specificity when adding points

Features desired – would you want these deleted to avoid user error?

1. damaged sidewalks
2. private schools
3. make all same changes as features observed
4. single family houses
5. unpaved walking paths
6. utility line hazards